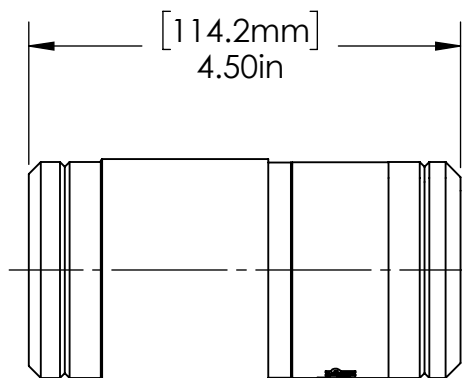
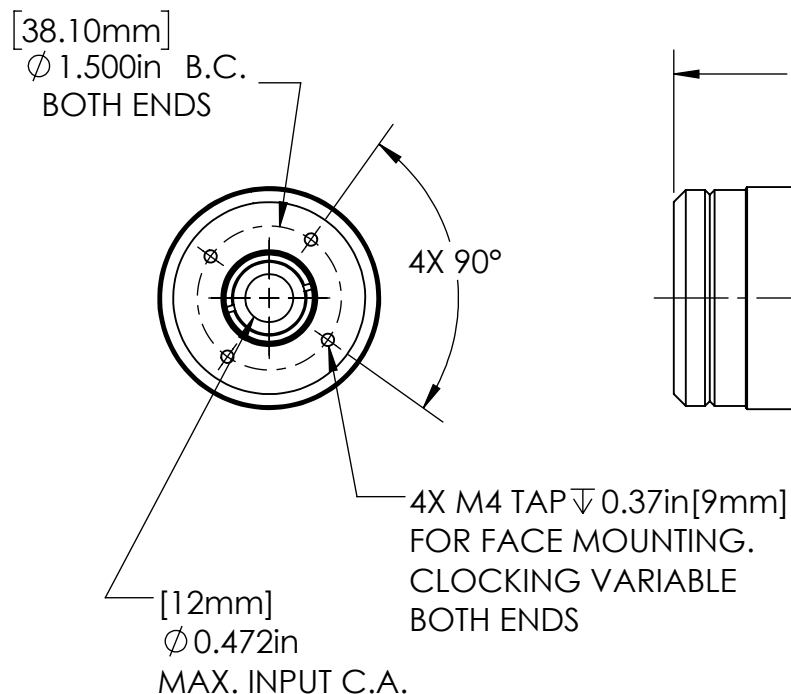


### EXAMPLE PART NOS.:

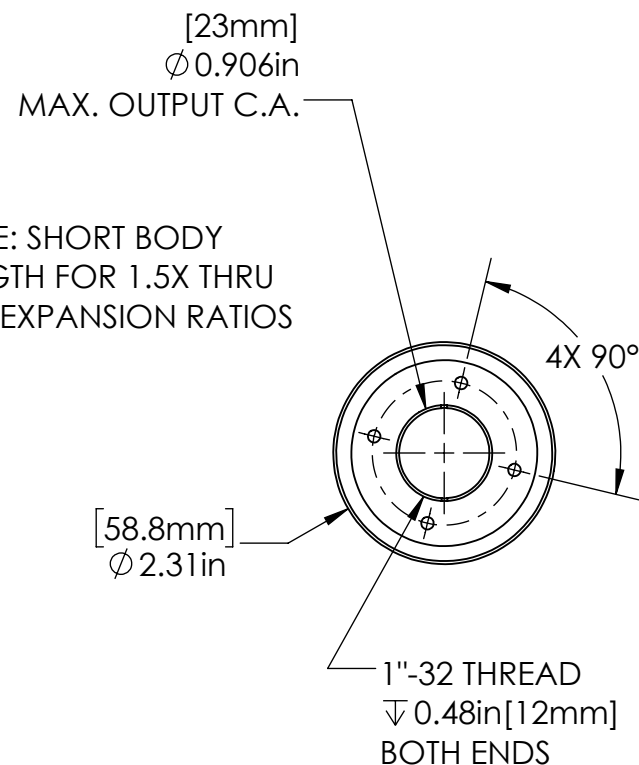
BEC-19-1.5-10.6-S: Laser Beam Expander/Collimator, 19mm Series, 1.5X Expansion Ratio, for use at 10.6μm, Short Body.


BEC-19-1.5-1064-S: Laser Beam Expander/Collimator, 19mm Series, 1.5X Expansion Ratio, for use at 1064-1070nm, Short Body.

Contact Haas LTI with your BEC-19 requirement.



NOTE: SHORT BODY  
LENGTH FOR 1.5X THRU  
3.0X EXPANSION RATIOS



FOR INFORMATION ONLY NOT FOR MANUFACTURING	DATE: 6/22/16	DRAWN BY: TA	CHK'D BY: GJH	TOLERANCES: (EXCEPT AS NOTED)	REV.	DESCRIPTION	DATE	APPD		37 IRONIA ROAD FLANDERS NJ 07836 (973) 598-1150 Fax: 598-1151	
HAAS DOC.# BEC-19-1.5-10.6-S-SALES				X.XXX= ± 0.005 X.XX= ± 0.01 X/X = ± 1/64 ANGULAR: ±0.5°							
\haas-server\Engineering\salesengineering\TimWebsite16\19mm\BEC-19\BEC-19-1.5-10.6-S\									BEC-19 1.5X BEAM EXPANDER/ COLLIMATOR - SHORT BODY LENGTH		BOM#
											SCALE: 1:2