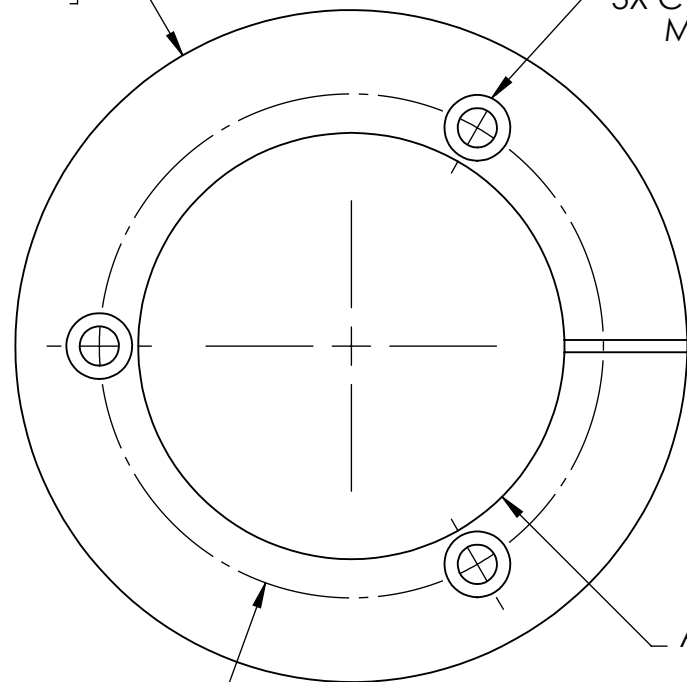


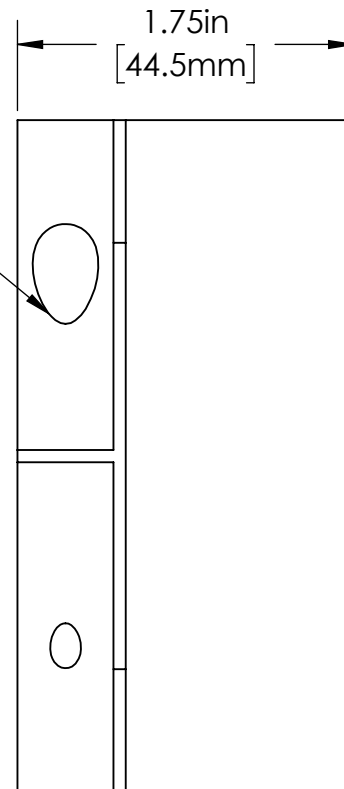
Ø 3.50in
[88.9mm]

3X C'BORE FOR
M5 SHCS

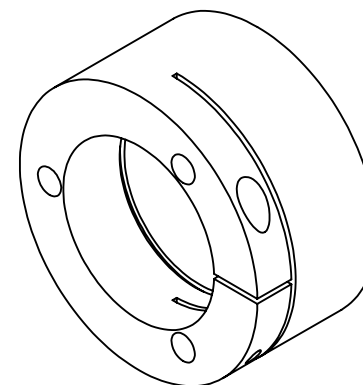


Ø 2.22in
[56.4mm]
ACCEPTS B-50
BEAM TUBES
WITH 2.00" CA

Ø 2.63in
[66.7mm]



M5 CLAMP SCREW



FOR INFORMATION ONLY
NOT FOR MANUFACTURING

DATE:
5/9/2017

DRAWN BY:
TA

CHK'D BY:
SG

TOLERANCES:
(EXCEPT AS NOTED)

X.XXX = ± 0.005

X.XX = ± 0.01

X X/X = ± 1/64

ANGULAR: ± 0.5°

NO.

REVISIONS

DATE

APPD



37 IRONIA ROAD
FLANDERS NJ 07836
(973) 598-1150
Fax: 598-1151

HAAS DOC.# TC-50-SALES

SPECIFICATIONS SUBJECT TO CHANGE WITHOUT NOTICE.
CONTACT HAAS LTI FOR MORE INFORMATION.

TC-50
CUSTOMER DIMENSIONAL DWG

BOM#

SCALE: 1:1